

Product Catalogue

Reliable cooling in the laboratory and health sector



Blood



Pharmaceutical



Laboratory



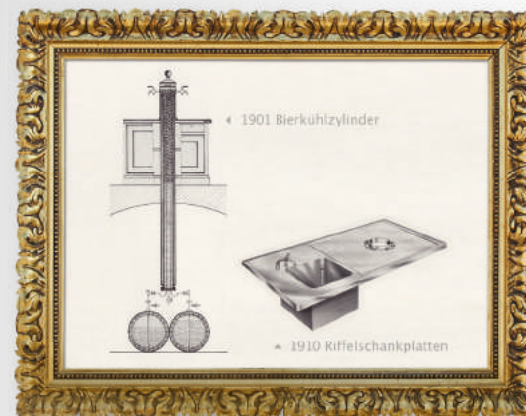
Temperature
Documentation

Pioneer and market leader with a long tradition

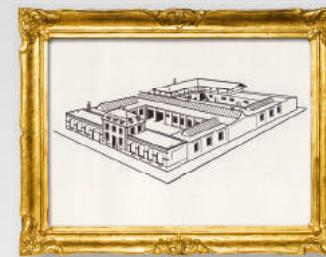
The success story of our brand started in the year 1865, the year of its inception. Since it was established, we have been a family-run company and have continued to develop and increase our know-how over generations. Based on over 150 years of experience in appliance engineering and later in medical refrigerators and freezers, we are continually optimizing and extending our product range. We have always been synonymous with high-quality products that meet the most stringent standards and offer maximum reliability. Our customers today include pharmacies, hospitals, clinics, blood banks, institutes and laboratories in over 100 countries.



1865 Philipp Kirsch establishes his coppersmith firm



1901 Production of beer cooling cylinders and stainless steel drop-in basins



1927 Large trade business is transformed into an industrial factory



1929 Bottled beer refrigerators manufactured from galvanized steel sheet



1956 First electrical refrigerators



1970s Pharmaceutical refrigerators



2017 New plant in Willstätt

 **Kirsch**
Made in Germany. Since 1865.



Innovative cooling – built in Germany, used all over the world

We take proven and reliable products to the next level. Our highly motivated development team is continuously setting high standards of product quality, functionality and efficiency.

We work in a sustainable, energy-saving and resource-efficient manner by using state-of-the-art technology and production methods. In addition, our restructured production concept speeds up product development and makes meaningful use of our capacities.

Company Kirsch is very active and engaged in DIN committees to help develop the future of cooling.. For example, we have developed a new cooling technology, called magnetocalorics.

As a leading innovator in this area, we are working towards getting this technology market ready.

Gerhard Müller,
Head of Design

Constant temperatures and optimum storage safety

Temperature stability is a decisive factor in the safe storage of sensitive chilled goods. Thanks to perfectly matched components, our products offer the best cooling conditions and the most accurate temperature control in the world. This is achieved by our newly developed PRO-ACTIVE controller with two standard built-in PT-1000 sensors. Temperature deviations in the interior can therefore be minimised to just 1.5 °C from the warmest to the coldest point (confirmed by a DIN measurement, available for models BL, MED, LABO and LABEX).

An automatic product monitoring and early pro-active warning system allows for convenient, stress free handling and fast response times which further increases safety. To guarantee this, every single one of our devices is precisely calibrated and tested in a trial run lasting several hours during final inspection. Another important benefit – in addition to the electronic control's high degree of reliability – are the savings in energy consumption of up to 60%.



The image shows the complete documentation.



Explosion protection at the highest level

Kirsch is a specialist in the safe and precise storage of flammable substances. We offer laboratory refrigerators and freezers with explosion-proof interiors for highly flammable chilled goods. We stand behind our 100% safety guarantee of our products when used as intended. Our LABEX® models, specially developed for these requirements, fulfil the most stringent safety standards. The TÜV-certified safety concept with a technical report protects contents and operating personnel alike.

Dr. Jochen Kopitzke,
CEO and owner

The highest standards and sustainable solutions

Quality assurance made easy: all important device data like data required for inspections by authorities, amongst others, can be accurately recorded and evaluated with the KIRSCH temperature documentation (standard on devices with PRO-ACTIVE control). A connection to the IT network enables live transmission of data, alarm forwarding to the PC as well as direct sending of warnings by email. Thanks to automatic data capture, our customized digital solutions are extremely resource-efficient. And more importantly: if in doubt, they serve as a reliable source of information to determine whether a certain chilled good can still be used. Our ISO-certified KIRSCH refrigerators and freezers are ideally designed especially for areas with the strictest cooling requirements. We use stable processes to ensure maximum safety and quality of our devices and services.

In addition to complying with the highest quality standards, we also consider sustainability to be a very important topic. All our products are designed for a long service life. This helps to preserve our planet's natural resources and means cost savings for our customers. At the same time, we have been able to permanently reduce power consumption as well as our noise emissions to far below the limit. With these measures, we are promoting the sustainable development of Philipp Kirsch GmbH, which is at the core of our company philosophy.



We would like to present our
three product lines to you

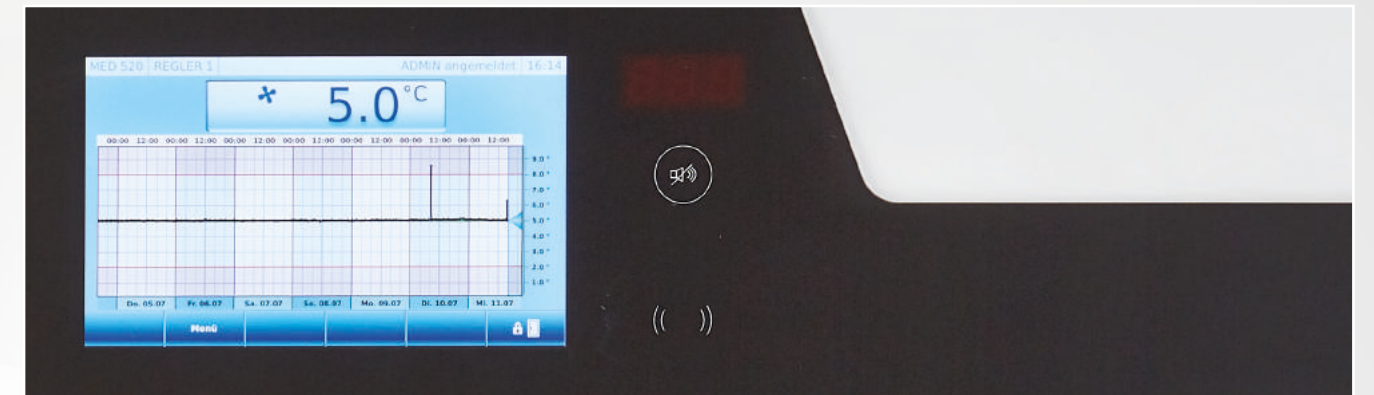
ESSENTIAL

ESULTIMATE

PRO*ACTIVE*

ESSENTIAL

ULTIMATE



- Elegant glass design
- Simple operation via a capacitive touch display
- Access control with a log
- Graphical display of the temperature curve and min/max temperature
- Digital data documentation with KIRSCH Datatnet software
- Quick-start
- Touch operation with laboratory gloves is possible
- Intuitive help with alarm messages and troubleshooting in plain text
- Operation via remote control is possible
- Includes the benefits of the PRO-ACTIVE line (page 18)

ULTIMATE

PROACTIVE



- Reduction of power consumption by up to 60%
- Faster response times in case of impending faults thanks to proactive alerts
- Reduction of temperature deviations in the refrigerated compartment
- Maximum storage safety due to perfectly matched components
- Includes the benefits of the ESSENTIAL line (page 20)

PROACTIVE

ESSENTIAL



- Your entry into KIRSCH quality
- Maximum reliability
- Durable
- Temperature stability
- Flexibility
- Maximum safety

ESSENTIAL



Explosion protection

All LABEX® models are specifically designed for storing explosive substances with maximum temperature stability. The interiors are tested by TÜV SÜD to guarantee that they are free of ignition sources in compliance with the ATEX Directive 2014/34/EU:

- All of the electrical equipment and components used in the interior (fans, temperature sensors, etc.) are specifically designed for use in zone 2.
- We also guarantee you maximum temperature stability in explosion-proof interiors.
- Intrinsically safe supply to the temperature sensors in the interior
- Explosion-proof blower
- Special earthing concept for discharging electrical potential
- Plastic parts in the interior have an antistatic design

(depending on the model)



LABEX 288 PRO-ACTIVE



LABEX 340 PRO-ACTIVE



LABEX 720 ULTIMATE

Laboratory
refrigerators with
an explosion-proof
interior



ULTIMATE	—	—	LABEX 288 ULTIMATE*	LABEX 340 ULTIMATE*	LABEX 468 ULTIMATE*	LABEX 520 ULTIMATE	LABEX 720 ULTIMATE
PRO-ACTIVE	LABEX 105 PRO-ACTIVE	—	LABEX 288 PRO-ACTIVE	LABEX 340 PRO-ACTIVE	LABEX 468 PRO-ACTIVE	LABEX 520 PRO-ACTIVE	LABEX 720 PRO-ACTIVE
ESSENTIAL	—	ESSENTIAL LABEX 125	—	—	—	—	—
PC-KIT-NET	Standard on the ULTIMATE, optional on the PRO-ACTIVE, not available on the ESSENTIAL						
compliant with DIN 13221	—	—	✓	✓	✓	✓	✓
Capacity	95 l	120 l	280 l	330 l	460 l	500 l	700 l
Temperature setting	approx. +2 to +15 °C	approx. +2 to +12 °C	approx. 0 to +15 °C	approx. 0 to +15 °C	approx. 0 to +15 °C	approx. 0 to +15 °C	approx. 0 to +15 °C
Voltage	220 - 240 V/50 Hz	220 - 240 V/50 Hz	220 - 240 V/50 Hz	220 - 240 V/50 Hz	220 - 240 V/50 Hz	220 - 240 V/50 Hz	220 - 240 V/50 Hz
Refrigerating machine for 60 Hz operation	optional	optional	optional	optional	optional	optional	optional
Power consumption (in watts)	86	115	100	128	170	234	237
Normal consumption (in kWh/24 h)	0.43	0.68	0.76	1.14	1.03	1.2	1.23
Permitted ambient temperature	from +10 °C to +38 °C	from +10 °C to +38 °C	from +10 °C to +38 °C	from +10 °C to +38 °C	from +10 °C to +38 °C	from +10 °C to +38 °C	from +10 °C to +38 °C
Heat emission (max. in watts)	191	130	173	178	280	543	545
Exterior dimensions (incl. distance from wall and door handle) (W x D x H in cm)	54 x 54 x 82	54 x 54 x 81	67 x 75 x 131/67 x 75 x 124	67 x 69 x 188/67 x 69 x 181	74 x 80 x 188/74 x 80 x 181	77 x 76 x 195.5	77 x 98 x 195.5
Interior dimensions (W x D x H in cm)	44 x 43 x 47 (usable depth 5 cm, usable width 2 cm less)	44 x 42 x 67 (usable depth above 5 cm, below 15 cm, usable width 2 cm less)	53 x 50 x 100 (usable depth above 9 cm, below 13 cm less)	53 x 45 x 128 (usable depth 5 cm less)	60 x 57 x 128 (usable depth 5 cm less)	60 x 57 x 140 (usable depth 11 cm, usable width 2 cm, usable height 13 cm less)	60 x 77 x 140 (usable depth 11 cm, usable width 2 cm, usable height 13 cm less)
Exterior dimensions with door open at 90° (W x D in cm)	54 x 106 cm	54 x 106 cm	67 x 135	67 x 127	74 x 144	77 x 144	77 x 165
Drawer/shelf inner dimensions (W x D x H in cm)	40 x 32 x 5.6/ 43 x 36	40 x 32 x 5,6/ 43 x 24 below, 43 x 33 above	50.4 x 32 x 5.6/ 52.7 x 39	50.4 x 32 x 5.6/ 52.7 x 39	57 x 43 x 5.6/ 59 x 50	59 x 45	59 x 65
Maximum load: drawer/shelf	13 kg/25 kg	13 kg/25 kg	16 kg/40 kg	16 kg/40 kg	24 kg/40 kg	24 kg/40 kg	—/40 kg
Weight	net 46 kg, gross 50 kg	net 42 kg, gross 44 kg	net 72 kg/gross 85 kg	net 93 kg/gross 105 kg	net 112 kg/gross 125 kg	net 120 kg/gross 148 kg	net 145 kg/gross 174 kg
Noise emission (for Ecool R600a)	41 dB (A)	40 dB (A)	40 dB (A)	40 dB (A)	40 dB (A)	41 dB (A)	42 dB (A)
Automatic defrost	✓	—	✓	✓	✓	✓	✓
Defrost water container for manual draining	✓	✓	✓	✓	✓	✓	✓
Temperature deviation Δ T compliant with DIN 13221 without defrost- ing	5.71 °C	2.26 °C	0.74 °C/0.74 °C	2.6 °C/2.6 °C	1 °C/1 °C	0.9 °C/0.9 °C	1 °C/1 °C
Re-circulating air cooling	—	—	✓	✓	✓	✓	✓
Alerts in case of power failure	✓	—	✓	✓	✓	✓	✓
Glass door with lock	optional	—	optional	optional	optional	optional	optional
Glass door	—	optional	—	—	—	—	—
Equipped with castors	optional	optional	optional	optional	optional	✓	✓
External housing – chrome-nickel steel 4301	—	—	—	—	—	optional	optional
Tabletop	optional	optional	—	—	—	—	—
Can be installed normally or under counters	✓	✓	—	—	—	—	—
Decorative frame	optional	optional	optional	optional	optional	optional	optional
Door coupling fitting	optional	optional	optional	optional	optional	optional	optional
Refrigerating machine fan, built-in	✓	optional	optional	optional	✓	✓	✓
Refrigerating machine, water-cooled	—	—	—	—	—	optional	optional
Flexible equipment is possible	✓	✓	✓	✓	✓	✓	✓
Plastic drawer	1	1	—	—	—	—	—
Plastic drawer with roller runners, conductive	—	—	1	2	optional	optional	—
Shelf	2	2	—	—	—	—	—
Shelf with overlays	—	—	3	4	6	5	5
Shelf with rails	—	—	optional	optional	optional	optional	optional

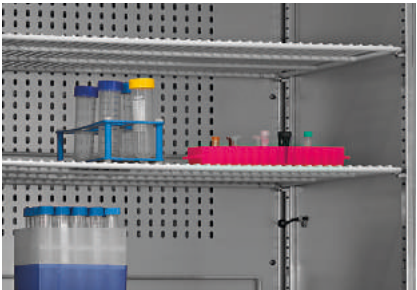
Laboratory
freezers with
an explosion-proof
interior



ULTIMATE	–	–	FROSTER LABEX 330 ULTIMATE*	FROSTER LABEX 530 ULTIMATE	FROSTER LABEX 730 ULTIMATE
PRO-ACTIVE	–	FROSTER LABEX 96 PRO-ACTIVE	FROSTER LABEX 330 PRO-ACTIVE	FROSTER LABEX 530 PRO-ACTIVE	FROSTER LABEX 730 PRO-ACTIVE
ESSENTIAL	ESSENTIAL FROSTER LABEX 71	–	–	–	–
PC-KIT-NET	Standard on the ULTIMATE, optional on the PRO-ACTIVE, not available on the ESSENTIAL				
Capacity	70 l	95 l	300 l	500 l	700 l
Temperature setting	approx. -15 °C to -22 °C	approx. -5 °C to -25 °C	approx. -10 to -30 °C	approx. -10 to -30 °C	approx. -10 to -30 °C
Voltage	220 - 240 V/50 Hz	220 - 240 V/50 Hz	220 - 240 V/50 Hz	220 - 240 V/50 Hz	220 - 240 V/50 Hz
Refrigerating machine for 60 Hz operation	optional	optional	optional	optional	optional
Power consumption (in watts)	100	119	540	550	550
Normal consumption (in kWh/24 h)	1.6	1.36	4.33	5.8	6.02
Permitted ambient temperature	from +10 °C to +32 °C	from +10 °C to +32 °C	from +10 °C to +32 °C	from +10 °C to +32 °C	from +10 °C to +32 °C
Heat emission (max. in watts)	129	159	660	717	706
Exterior dimensions (incl. distance from wall and door handle) (W x D x H in cm)	47 x 51 x 74	54 x 54 x 82	74 x 78 x 166/74 x 78 x 159	77 x 76 x 195.5	77 x 98 x 195.5
Interior dimensions (W x D x H in cm)	35 x 41 x 55 (usable depth above 9 cm, below 20 cm less)	44 x 42 x 47 (usable depth 5 cm, usable width 2 cm less)	59 x 52 x 95 (usable width 2 cm, usable depth 10 cm, usable height 13 cm less)	62 x 57 x 140 (usable width 2 cm, usable depth 11 cm, usable height 13 cm less)	62 x 77 x 140 (usable width 2 cm, usable depth 11 cm, usable height 13 cm less)
Exterior dimensions with door open at 90° (W x D in cm)	47 x 96	54 x 106	74 x 142	77 x 144	77 x 166
Shelf (W x D in cm)	35 x 20 (below), 35 x 31 (above)	43 x 36	57 x 42	59 x 45	59 x 65
Maximum load: drawer/shelf	–/25 kg	13 kg/25 kg	–/40 kg	24 kg/40 kg	–/40 kg
Weight	net 34 kg, gross 39 kg	net 42 kg, gross 50 kg	net 127 kg/gross 142 kg	net 138 kg/gross 163 kg	net 165 kg/gross 200 kg
Noise emission	39.9 dB (A)	38 dB (A)	51.2 dB (A)	53.3 dB (A)	53.9 dB (A)
Automatic defrost	–	–	✓	✓	✓
Defrost water container for manual draining	–	✓	✓	✓	✓
Temperature deviation Δ T compliant with DIN 13221 without defrost- ing	3.3 °C	3 °C	1.74 °C/1.74 °C	2 °C/2 °C	2 °C/2 °C
Re-circulating air cooling	–	–	✓	✓	✓
Alerts in case of power failure	–	✓	✓	✓	✓
Equipped with castors	optional	optional	optional	✓	✓
External housing – chrome-nickel steel 4301	–	–	–	optional	optional
Tabletop	–	optional	–	–	–
Can be installed normally or under counters	✓	✓	–	–	–
Door coupling fitting	optional	optional	–	–	–
Decorative frame	optional	optional	optional	optional	optional
Digital temperature display prepared for external installation into furniture front	–	✓	–	–	–
Refrigerating machine fan, built-in	optional	✓	✓	✓	✓
Refrigerating machine, water-cooled	–	–	–	optional	optional
Flexible equipment is possible	–	✓	✓	✓	✓
Plastic drawer	–	optional	–	–	–
Plastic drawer with roller runners, conductive	–	–	–	optional	–
Shelf	4	2	–	–	–
Shelf with overlays	–	–	4	5	5
Shelf with rails	–	–	optional	optional	optional



Intrinsic safety
Use of conductive, height-adjustable drawers with a variable interior arrangement.**



Protected interior
A current discharge system prevents any static charges.**



High temperature precision due to the re-circulating air cooling
The axial fan used for the re-circulating air cooling is protected by means of a safety power



Explosion protection
The interior is free of ignition sources.**

*On request
**depending on the model



Temperature documentation with KIRSCH DATANET

Maximum quality assurance for your chilled goods – complete and simply reliable

Complete and reliable temperature documentation is often mandatory as part of quality assurance (e.g. for the cooling of blood and pharmaceuticals). Manual on-site data capture is time-consuming and often inaccurate. Use our solutions to deal with these tasks simply and quickly – irrespective of whether you use the KIRSCH PC-KIT or work traditionally with our mechanical thermometers. Use your time at work efficiently by leaving the documentation to our KIRSCH DATANET software.

Your benefits

Cost-effective

- Reduced costs through the automatic capture and evaluation of data
- Software is included

Easy

- Due to the use of a standard Windows® PC or server
- The reading and storage of data as well as the adjustment of the refrigerator is done from the PC*
- The recorded data can be sent by email

Flexible

- Can be retrofitted to all KIRSCH refrigerators

Safe

- Recording and evaluation of a wide range of technical values (door opening, alarm messages, etc.) even in case of power failure. Door opening log for the ULTIMATE
- Dangers are averted at an early stage through monitoring*
- Transmission of alarm messages by email*



PC-KIT-NET

Automatic temperature documentation and monitoring through the network (LAN or WiFi). Unlimited number of devices can be integrated. Simultaneous data access for up to 20 clients per server. Access with two servers is possible.



KIRSCH DATALOG

For retrofitting of the automatic temperature documentation and monitoring for devices **without an RS485 interface** and external devices. Including a minimum/maximum temperature memory and alerting.



External temperature recording

Temperature sensor that can be retrofitted for external connection to PC-supported temperature evaluation devices



Disc-type thermometer

Depending on the model, this is either installed into the machine room screen of the refrigerator or freezer or integrated with an additional housing add-on.



Pen-recording thermometer

The easiest method for retrofitting the temperature documentation.

KIRSCH DATANET software and set-up service

Complete temperature documentation, accurate data evaluation and continuous monitoring.

Minimal effort and maximum security due to:

- Automatic capture, documentation and analysis of a wide range of values from a refrigerator
- Real-time monitoring (except the PC-KIT-STICK), even from decentralised devices
- Efficient administrative structures, worldwide access and status queries when setting up remote access
- Maximum automation and security because the software can be integrated with the existing security environment of the server.
- Different access rights (administrator, user, guest)
- Automatic connection and update of the data from integrated refrigerators when starting up the software (if KIRSCH DATANET is not permanently in operation)
- Server software runs as a “Windows Service” (this is automatically launched at the start-up and runs in the background)
- Exportable data that can be easily transmitted by email or integrated with other programs
- RFID access authorisation for the ULTIMATE

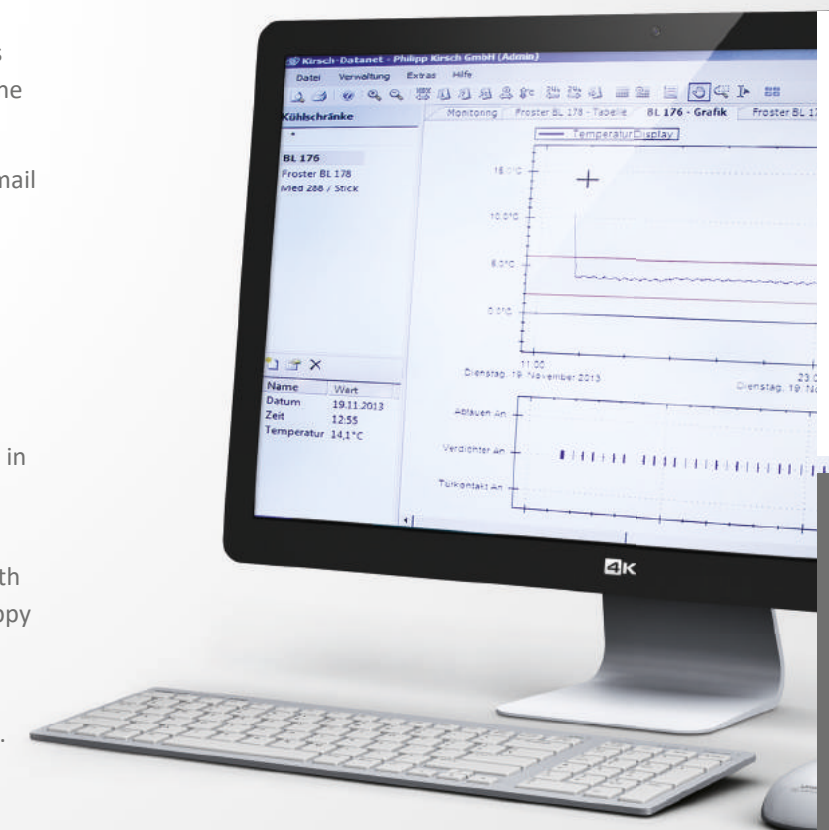
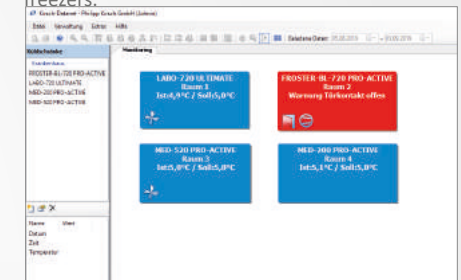
Set-up service

Integration with your existing network is easy. The network parameters (IP address, etc.) are entered in the control unit of the refrigerator or freezer.

If you have any questions regarding the set-up of your temperature documentation system in conjunction with our KIRSCH DATANET software solution, we will be happy to advise and assist you.

Request an appropriate quotation for the set-up of your system at temperaturdoku@kirsch-medical.de.

The data can be displayed in different ways, at the top in the form of a list. At the bottom, real-time monitoring of the integrated refrigerators or freezers.



*PC-KIT-NET

Accessories

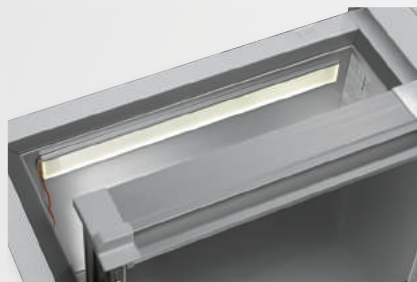
Structural options

KIRSCH refrigerators and freezers provide numerous equipment options that can be retrofitted even at the set-up location.



Glass door with lock

See clearly: avoid opening the door unnecessarily to inspect the contents. Lockable.



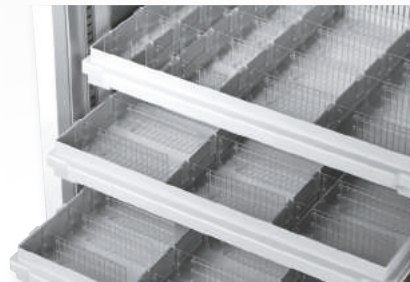
Side wall/ceiling interior lighting

Optional, optimal and energy-efficient lighting for the interior using an LED light strip.



Water-cooled refrigerating machine

For special cases, refrigerating machines with heat exchangers for cold-water connection are available for some models.



Drawers/length and cross dividers

Optimised on a model-specific basis and partially height-adjustable. The length and cross dividers are variably adjustable.



Refrigerator and freezer combination

Refrigerators and freezers can be stacked and combined one above the other with a connecting piece.



Equipped with castors

Equipped with steering and fixed castors. (depending on the model).



Defrost water containers

Transparent, for manually draining water.



Stainless steel shelves and wire shelves

Stainless steel shelves, guaranteed rust-free, and wire shelves, robust with a load capacity of up to 40 and 50 kg.

If undelivered please return to below address

Book Post



Scientific Research Instruments Company Private Limited

42-43, 2nd & 3rd Floor, 1st Cross, Gubbalala, Bengaluru - 560 061

Telephone : 080 4757 2577 | 080 4302 5791

Sales

info@srico-labworld.com

Mobile : +91 9900674407

Service

service@srico-labworld.com

Mobile : +91 9900055879

Bhubaneswar | Hyderabad | New Delhi | Navi Mumbai | Vadodara

Ahmedabad | Chandigarh | Chennai | Goa | Guwahati | Kolkata | Lucknow | Pune | Thiruvananthapuram | Visakhapatnam



www.srico-labworld.com